

SAILING INSTRUCTIONS

For the Dragon Interport Regatta
15-18 September 2023
Conducted by KANSAI YACHT CLUB



Supported by

SUNTORY



DMG MORI

1. RULES

- 1.1 Racing will be governed by the rules as defined in the Racing Rules of Sailing for 2021-2024 (RRS), including Appendix D (Team Racing Rules).
- 1.2 RRS D2 (Umpired Races) apply.
- 1.3 RRS D1.1(b) is changed by replacing "two hull lengths" with "three hull lengths".
- 1.4 Appendix G (identification on Sails) will not apply.
- 1.5 The International Dragon Class Rules shall apply.
- 1.6 No national authority prescriptions will apply.
- 1.7 If there is a conflict between languages English text will take precedence.
- 1.8 In the event of conflict between any of the rules and regulations, other than RRS, then the Sailing Instructions will prevail. This changes RRS 63.7.

2. NOTICES TO COMPETITORS

- 2.1 Notices to competitors will be posted on the Interport Official Notice Board located at the KYC "Wet Bar".
- 2.2 Skippers are advised to, and others may, attend the Competitors Briefing at the Members Bar of the 3rd floor of the KYC on 17:00 hours on Friday, 15th September 2023.
- 2.3 Daily morning meetings may be held at the "Wet Bar" in the Clubhouse on 09:00 hours each race day.

3. CHANGES IN THE SAILING INSTRUCTIONS

Any change in the Sailing Instructions shall be posted on the Official Notice Board by 09:00 hours on the day it will be take effect, except that any change to the schedule of races will be posted by 18:00 hours on the day before it will take effect and signaled as per RRS Race Signals.

4. SIGNALS MADE ASHORE

4.1 Signals made ashore will be displayed on the flagpoles at the KYC, "Wet Bar".

4.2 When flag AP is displayed ashore, '1 minute' is replaced with 'not less than 30 minutes' in race signal AP. This changes Race Signals.

4.3 When flag Y is displayed ashore, RRS 40 applies at all times while afloat. This changes the Part 4 preamble.

5. BOATS

5.1 The Interport will be sailed in International Dragon Class boats, kindly provided by their respective owners for competitors, who shall not modify them or cause them to be Modified in any way except that:

5.1.1 a compass may be tied or taped to the hull or spars;

5.1.2 wind indicators, including yarn or thread, may be tied or taped anywhere on the boat;

5.1.3 hulls, keels and rudders may be cleaned, but only with water;

5.1.4 adhesive tape may be used anywhere above the water line;

5.1.5 all fittings or equipment designed to be adjusted may be adjusted, provided that the class rules are complied with.

5.1.6 running repairs can be made provided the boat is not permanently affected by these repairs.

5.2 No spinnaker will be provided by the organizing authority. Own Spinnakers shall be brought by each team.

5.3 The Red protest flag for protesting will be provided by the race committee for each boat.

5.4 The penalty for not complying with one of the above SI 5.1 or 5.2 will be disqualification from all races sailed in which the instruction was broken.

5.5 All boats will be afloat before 17:00 hrs on the day preceding the first race and will not be hauled out during the Interport except with and according to the terms of prior written permission of the race committee.

5.6 Boat Fleet identification flags provided by the race committee for each boat during the Interport shall not be removed except by the race committee.

5.7 Competitors shall not transfer between boats any item except their personal belongings.

5.8 Competitors shall report any damage or loss of equipment, however slight, to the race officer before the start of the subsequent race. The penalty for breaking this instruction, unless the protest committee is satisfied that the competitor made a determined effort to comply, will be disqualification from the race most recently sailed.

6. ASSIGNMENT BOATS

- 6.1 Teams are assigned a fleet of three boats for each race in accordance with the Schedule of Races, Attachment C.
- 6.2 The “Blue Fleet” may be identified by the blue flag attached to the backstay. The “Green Fleet” may be identified by green flags attached to the backstay. The “White Fleet” may be identified by the white flag attached to the backstay.
- 6.3 The teams assigned designation throughout the Interport will be drawn at the skippers briefing. Rotation of fleets and teams are set out in the Schedule of Races.
- 6.4 Following each race, fleets and teams shall rotate as set out in the Schedule of Races. Rotation may take place on the water, in a manner determined by the race committee.

7. TYPE OF RACING, SCHEDULE OF RACES AND ORDER OF STARTING

7.1 TYPE OF RACING

This Interport shall consist of team races.

7.2 INTERPORT SCHEDULE

7.2.1 Racing is scheduled for Saturday, Sunday and Monday, 16th, 17th and 18th of September 2023.

7.2.2 The warning signal for the first race each race day will be made at 10:30hrs.

7.2.3 To alert boats that a race or a sequence of races will begin soon, an Orange Flag and two (2) fleet flags (Blue, Green and/ or White) of the fleet participating in that race as a pre-warning signal will be displayed with two sounds at least one minute before a warning signal is made.

7.2.4 Subsequent races will be sailed as soon as practicable after the completion of the previous race.

7.2.5 On Monday, 18th September 2023, no warning signal will be made after 15:00hrs.

7.2.6 The number of races sailed each day will be determined by the race committee. The race committee may terminate any race or the event when, in its opinion, it is impractical to attempt to hold further races under existing weather conditions or in the remaining scheduled time available.

7.2.7 A team competing against another team is a race. The Interport shall consist of three (3) rounds. A round shall consist of six (6) races comprising each team competing against each other twice.

8. ORDER OF STARTING

Races will be sailed in the order set forth in the Schedule of Races, Attachment C, unless altered by the race committee.

9. RACING AREA

SI Attachment A shows the location of racing areas. The racing area may be south of the Nishinomiya Harbor in the general areas.

10. THE COURSE

- 10.1 The diagram in SI Attachment B shows the course, including the approximate angles between legs, the order in which marks are to be passed, and the side on which each mark is to be left. The distance between Mark 1 and Mark 2 will vary based on the wind conditions but will most likely be 0.8 mile. If so, the distance between Start – Finish line (SF) and Mark 1 may be 0.4 mile.
- 10.2 The target time for each race will be 40 minutes. Failure to reach the target time or the target time shall not be grounds for redress. This changes RRS 62.1. exceed
- 10.3 Boats shall return to mark 2 from mark 1 through the SF gate.
- 10.4 Boats may return to mark 1 from mark 2 through the SF gate, or not through the SF gate, if they choose.

11. MARKS

- 11.1 The race committee signal boat on station will display the KYC official flag.
- 11.2 Marks 1 and 2 will most likely be Pink inflatable teardrop-shaped buoys.
- 11.3 SF Gate is between the race committee signal boat at one end and a Light blue inflatable teardrop-shaped buoy at the other end.
- 11.4 The race committee signal boat and the inflatable buoys referred to in this SI shall be marks for the purposes of RRS 31, Touching a mark.

12. THE START

- 12.1 The Class flag is the international Dragon class flag.
- 12.2 Races will be started using RRS 26.
- 12.3 The starting line will be between a staff displaying an orange flag on the race committee signal boat at the starboard end and the course side of a Light blue inflatable teardrop-shaped buoy at the port end.
- 12.4 Boats whose warning signal has not been made shall avoid the starting area during the starting sequence for other races.
- 12.5 A boat that does not start within four (4) minutes after her starting signal will be scored Did Not Start without a hearing. This changes RRS A5.1 and A5.2.
- 12.6 The race committee will hail the sail number of any boat(s) recalled. Failure of a competitor to hear this hail will not be grounds for redress. This changes RRS62.1(a).

13. CHANGE OF THE NEXT LEG OF THE COURSE

- 13.1 To change the next leg of the course, the race committee will lay a new mark and remove the original mark as soon as practicable. When in a subsequent change a new mark is replaced, it will be replaced by an original mark.

14. THE FINISH

The finishing line will be between a staff displaying an orange flag on the race committee signal boat

at one end and the course side of a Light blue inflatable teardrop-shaped buoy at the other end of the SF.

15. TIME LIMIT AND TARGET TIMES

15.1 The time limit for each race shall be one (1) hour for the first boat to finish.

15.2 Boats failing to finish within 10 minutes after the first boat sails the course and finishes will be scored Did Not Finish. This changes RRS 35 and A5.

16. PENALTY SYSTEM

16.1 RRS D1.3 (Penalties) will apply.

17. UMPIRING AND FLAGS

17.1 The event will be umpired in accordance with RRS D2, Umpired Races.

17.2 When a boat protests under a rule of Part2 or under RRS 31 or 42, the boat shall hail "Protest" and display a Red protest flag at the first reasonable opportunity under RRS D2.2.

17.3 To signal a protest, the Red protest flag shall be displayed from a concealed position to a position where it is easily visible to the protested boat and Umpires.

17.4 The Red protest flag will be provided for each boat by the race committee.

17.5 The intention is to have two umpire boats full time on each race.

18. PROTESTS AND REQUESTS FOR REDRESS.

18.1 For protests and requests for redress other than protests under a rule listed in RRS D2.2, competitors shall inform an Umpire or the Race Committee at the first reasonable opportunity upon finishing. The Umpires will, when appropriate, hear protests and requests for redress while afloat.

18.2 The protest time limit for competitors is five (5) minutes after her finishing and for the Race Committee or Jury it is 60 minutes after the last boat finishes the last race of the day.

18.3 A hearing may be declined if it is not relevant to progress to the next round. This changes RRS 63.1.

18.4 When a hearing ashore is necessary, the schedule will be published no later than 30 minutes after the end of the protest time limit.

18.5 Breaches of SI 12.4, Avoiding the starting area and SI 23, Trash disposal, will not be grounds for a protest by a boat. This changes RRS 60.1(a). Penalties for these breaches will be at the discretion of the jury.

18.6 Prizes will be awarded regardless of appeal.

19. SCORING

19.1 RRS D3 and D4 will apply. Each race will be scored as provided in RRS D3 and the series will be scored as provided in RRS D4.

19.2 If any round is not completed by the finish of racing on the last day of the Interport, the scores from that round will not be counted for the Interport series unless required under RRS D4.3.

19.3 One round shall be completed to constitute the Interport series unless required under RRS D4.2.

20. PENALTY FOR DAMAGE

The penalty for causing damage to a boat by negligence, careless handling, or gross infringement of a rule in Sportsmanship and the Rules, Part 1 Fundamental Rules, Part 2, RRS 42 or RRS D, shall be disqualification of the skipper and the crew from the Interport and liability for damages in accordance with SI 20.

21. DAMAGE AND DELAYS ALLOWED FOR REPAIRS

21.1 A boat sustaining damage which requires repair shall display a red flag at the first reasonable opportunity and if possible, continue racing. The race officer shall be informed as soon as possible after a race.

21.2 Each helmsman shall inform the next helmsman of the boat of any defect which may prejudice the performance of the boat.

21.3 The time allowed for the repair will be that amount of time the race officer deems necessary. No amount of time will be allowed for breakdowns while racing.

21.4 In the event that a boat is unable to compete in further races owing to damage, the race committee may replace her. The boat shall then be used until such time when the damaged boat has been repaired to the satisfaction of the race officer.

22. ADVERTISING

Boats may display advertising supplied by the organizing authority.

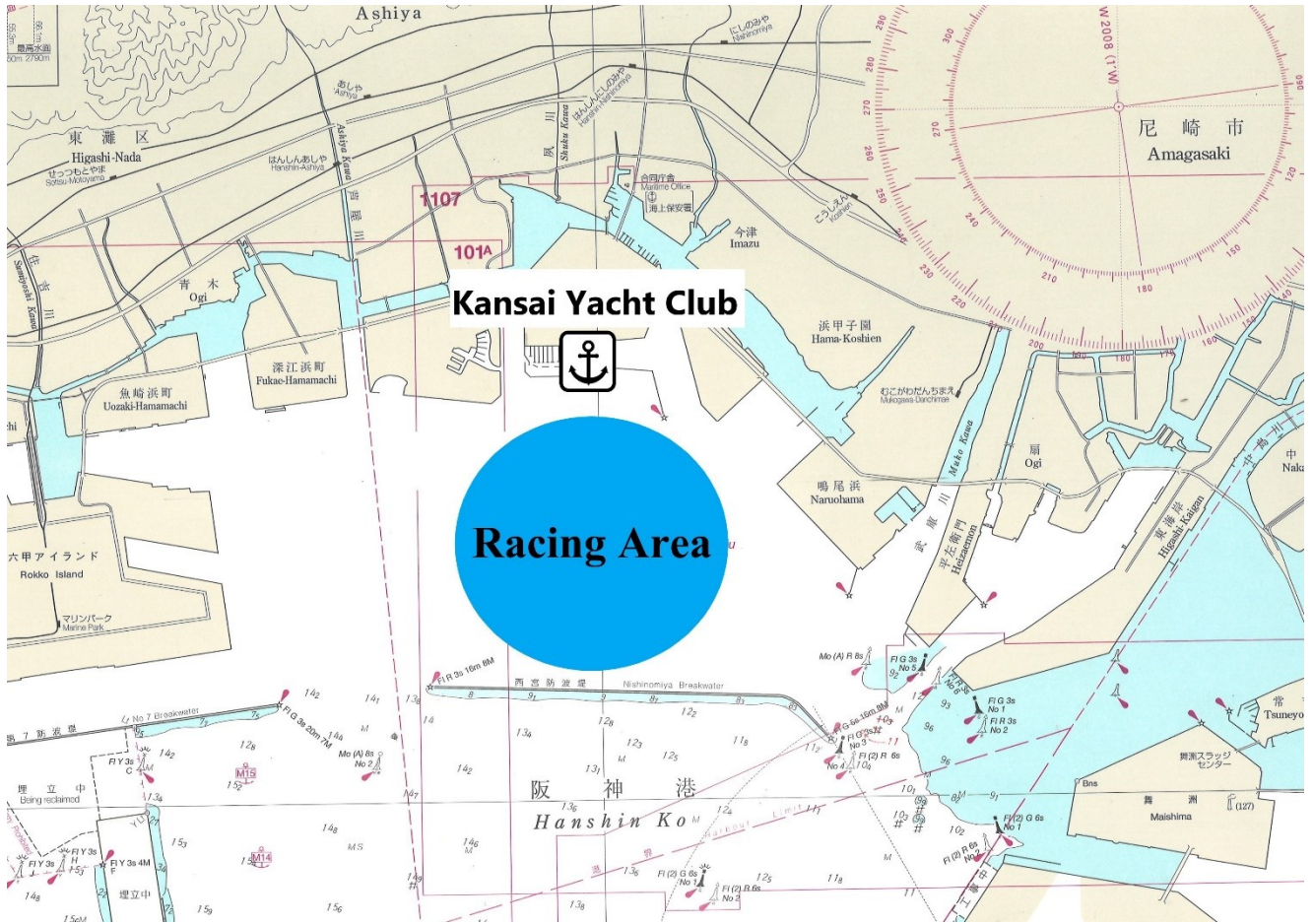
23. TRASH DISPOSAL

Boats shall not put trash in the water. Trash may be placed aboard support and race committee boats.

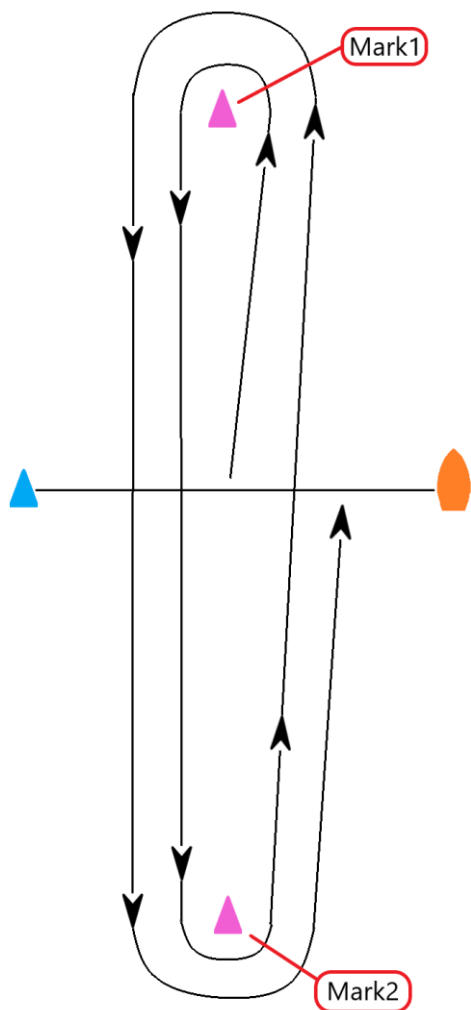
24. DISCLAIMERS OF LIABILITY




Competitors participate in the Interport entirely at their own risk and furthermore understand and accept the terms of this SI. See RRS 4, Decision to Race. The Japan Dragon Association, the KYC, boat owners, sponsors and race committee or their staff or representatives, will not accept any liability for damage or personal injury or death sustained in conjunction with or prior to, during, or after the Interport.

(Attachment A: Racing Area)



(Attachment B: Course Diagram)



-  Race committee signal boat
-  Mark 1 and Mark 2
-  Start/Finish Mark

«Course»

Start-Finish (SF) Line → Mark 1 → SF Gate → Mark 2 → Mark 1 → SF Gate → Mark 2 → Start-Finish (SF) Line

(Attachment C : Schedule of Races)

The teams assigned designation throughout the Interport will be drawn at the skippers briefing.

Rotation of fleets and teams are set out in the Schedule of Races.

【Race Schedule】

Day 1 : Round robin 1

	Boat Fleet	RHYC	RSYS	KYC
RHYC	Blue		1	2
RSYS	Green	5		3
KYC	White	6	4	

Day 2 : Round robin 2

	Boat Fleet	RHYC	RSYS	KYC
RHYC	White		9	7
RSYS	Blue	10		8
KYC	Green	11	12	

Day 3: Round robin 3

	Boat Fleet	RHYC	RSYS	KYC
RHYC			14	15
RSYS		18		13
KYC		17	16	

(Attachment D: Schedule of Events)

【Schedule of Events】

	Date	Time	Event
Fri	September 15	12:00-17:00	Registration (KYC Interport Race Office)
		13:00-17:00	Rigged Dragons available for pre-race sail (Pontoon)
		16:45-17:00	Flag Raising Ceremony
		17:00-18:00	Competitors Briefing (KYC 3 rd Floor “Members Bar”)
		18:00-19:30	Commodore’s Cocktail Party (KYC 3 rd Floor “Members Bar”)
Sat	September 16	8:30	Transportation from Kobe Bay Sheraton to KYC ready
		9:00	Morning meeting (KYC “Wet Bar”)
		9:30-10:00	Allocation of Crews & Yachts and sail to Course Area (Pontoon) Spectator vessel available
		10:30-	Racing-Round Robin 1
		17:00	Return to KYC
		18:00-20:00	Welcome Party (KYC 2 nd Floor)
Sun	September 17	8:30	Transportation from Kobe Bay Sheraton to KYC ready
		9:00	Morning meeting (KYC “Wet Bar”)
		9:30-10:00	Allocation of Crews & Yachts and sail to Course Area (Pontoon) Spectator vessel available
		10:30-	Racing-Round Robin 2
		17:00	Return to KYC No function Organized
Mon	September 18	8:30	Transportation from Kobe Bay Sheraton to KYC ready
		9:00	Morning meeting (KYC “Wet Bar”)
		9:30-10:00	Allocation of Crews & Yachts and sail to Course Area (Pontoon) Spectator vessel available
		10:30-	Racing-Round Robin 3
		16:30	Return to KYC
		19:00-21:00	Closing Ceremony followed by Presentation Dinner (Kobe Bay Sheraton Hotel & Towers)